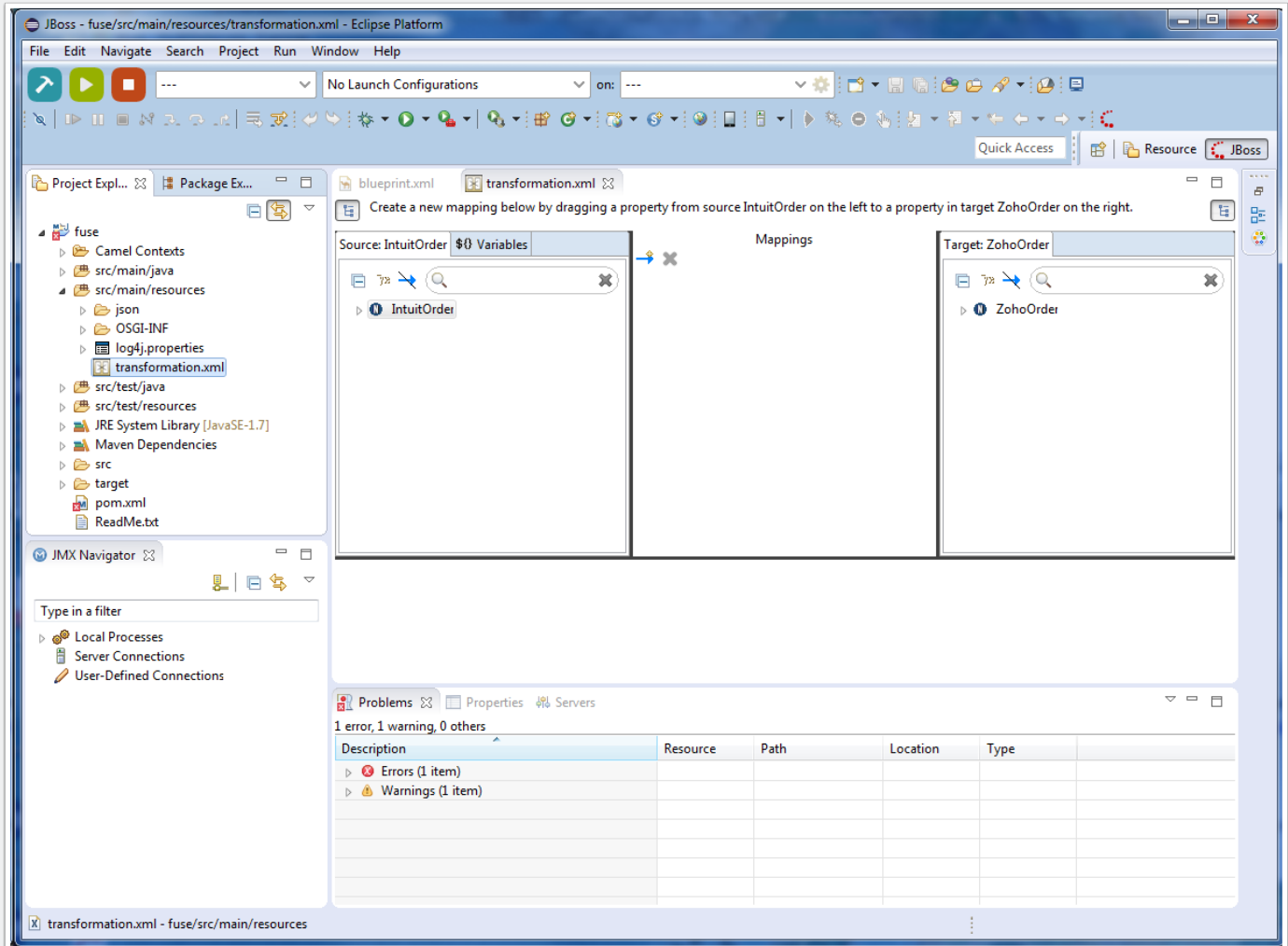


# Updated Idea for Model Reload Wizard

## From the Transformation editor

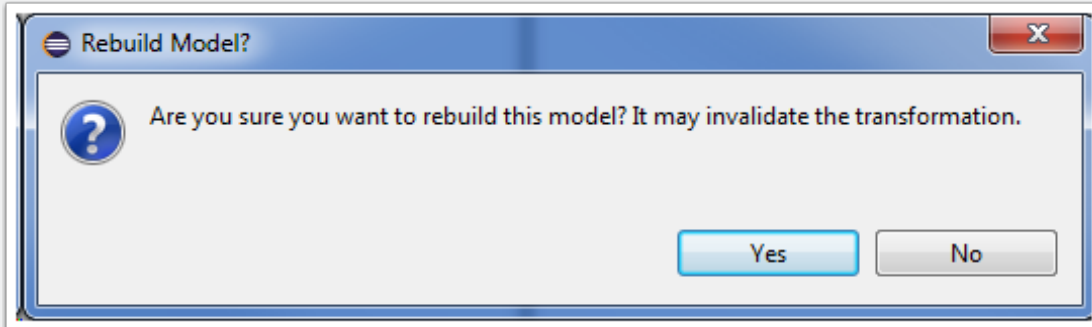
Right-click on the model root you wish to reload (this example has two json file-based models). Select "Reload"



# Updated Idea for Model Reload Wizard

## Dialog pop-up "Are you sure?"

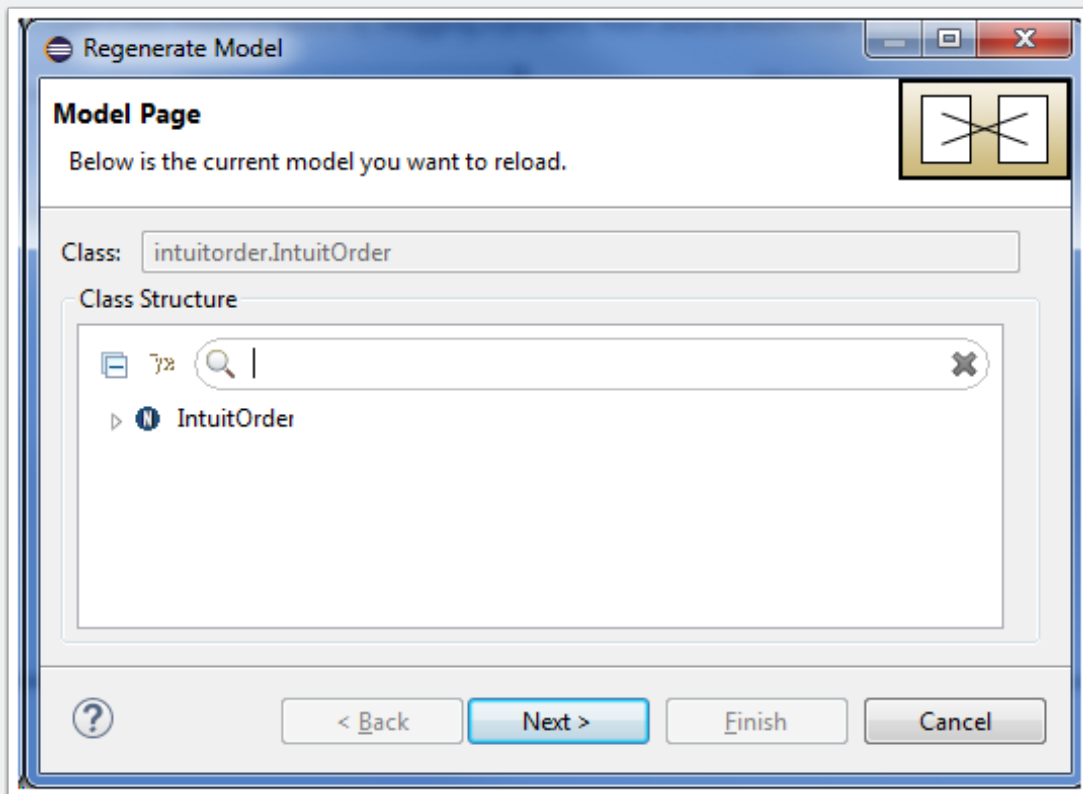
This particular path could have disastrous results for the user, so we need to make sure they understand the risks.



# Updated Idea for Model Reload Wizard

## Regenerate Model wizard

This is the first page of the wizard, which shows the model as it exists today. Click Next.

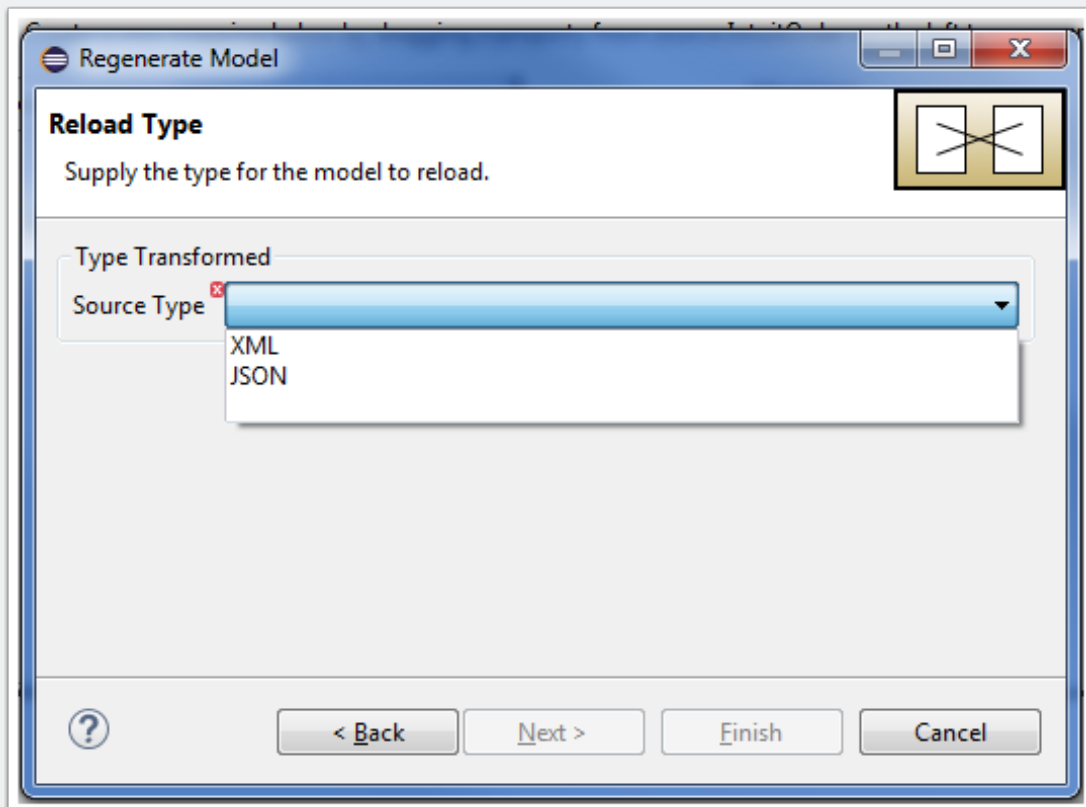


# Updated Idea for Model Reload Wizard

## Specify the type you want to reload

At this point we don't know what they used to generate the model in the first place. We only have to concern ourselves with the specific types where we generate Java classes for them - the Other and Java cases don't make sense in this case. The user is responsible for those.

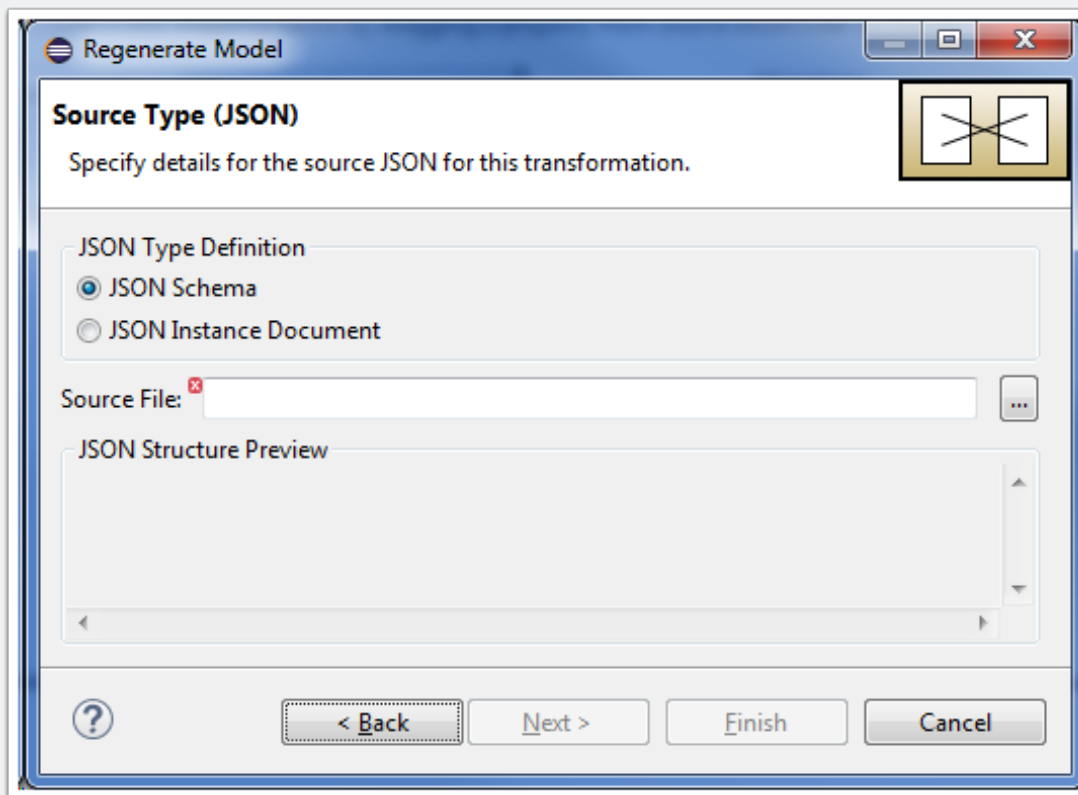
This list would also include HL7, CSV, and any future formats we would also support.



# Updated Idea for Model Reload Wizard

## Type-specific page

For this page we are reusing the same page as the New Transformation wizard. The user specifies the source of the JSON and can then move on.



## Final page

This is the page I'm working on now. The idea is that we generate the model when they hit this page and put it in a temporary location, then offer a merged view highlighting any changes that were made (fields/levels added or removed). If they approve the change, they hit Finish and move on.

# Updated Idea for Model Reload Wizard

I'm working on using the "org.eclipse.compare" framework to create a comparison viewer right now. The StructureDiffViewer looks possible... [http://help.eclipse.org/mars/index.jsp?topic=%2Forg.eclipse.platform.doc.isv%2Fguide%2Fcompare\\_contentviewer.htm](http://help.eclipse.org/mars/index.jsp?topic=%2Forg.eclipse.platform.doc.isv%2Fguide%2Fcompare_contentviewer.htm)

