

Deliver print ready PDF's for conferences

This document contains a recipe for creating correct print ready PDF's.

Please find the correct program, Indesign or Illustrator, and follow the three steps.

If you have any questions, please contact us:
print@macsimum.no

Wall measurements

1-meter: (BxH) 947 x 2510mm

2-meter: (BxH) 1947 x 2510mm

3-meter: (BxH) 2891 x 2510mm

4-meter: (BxH) 3891 x 2510mm

4-meter: (BxH) 4002 x 4010mm*

6-meter: (BxH) 6002 x 2510mm

6-meter: (BxH) 6002 x 4010mm*

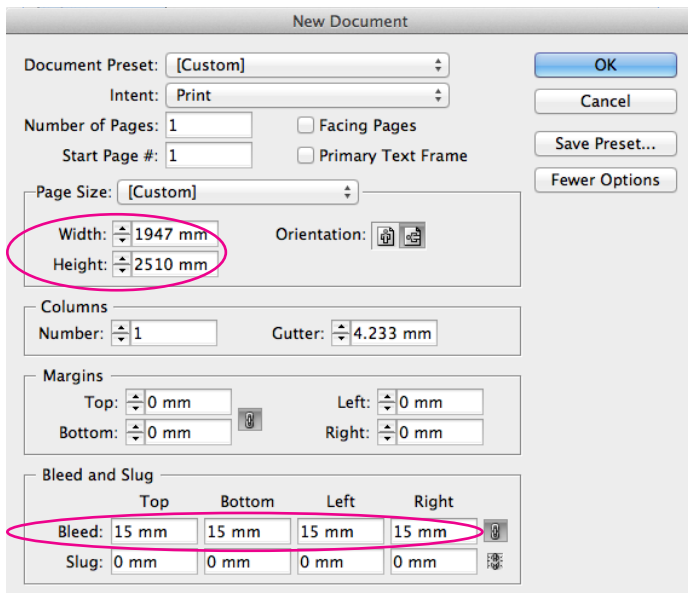
10-meter: (BxH) 10002 x 4010mm**

12-meter: (BxH) 12002 x 4010mm***

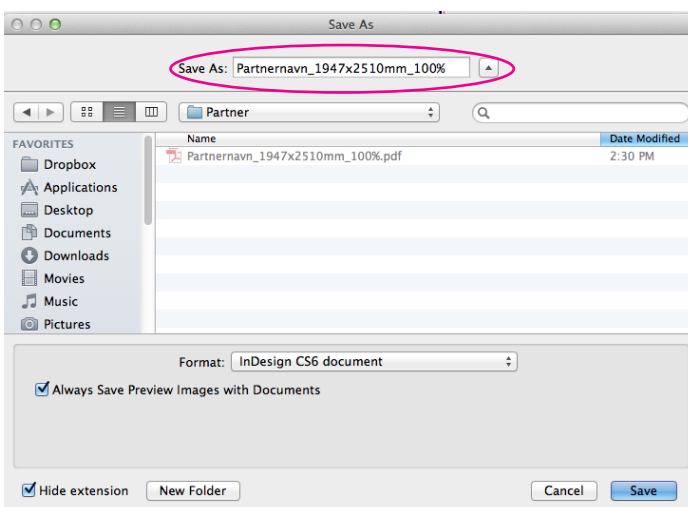
* Measurement for restaurant walls

** Measurements for 10m conceptstand.

*** Measurements for 12m restaurantwall.



1 Make sure your measurements and bleed is correct.



2 Include company, size and production percentage in the file name when storing your file.

Print ready PDF's in Indesign

1. NEW DOCUMENT

(command/ctrl + N OR File > New Document)

1.1 Make sure the measurements are correct according to your stand. (See "Wall Measurements")

1.2 Specify the Bleed to 15mm.

(Large walls may need to be created i 50, 25 or 10 percent. Specify Bleed accordingly)

Note! If you've already have created a document, you may edit the same settings here:
alt+command+P OR File > Document Setup

2. SAVE: DOCUMENT - FILE NAME

(command+shift+S or File > Save as)

2.1 Include three elements:

- Company Name
- Width x Height in mm
- Percentage*

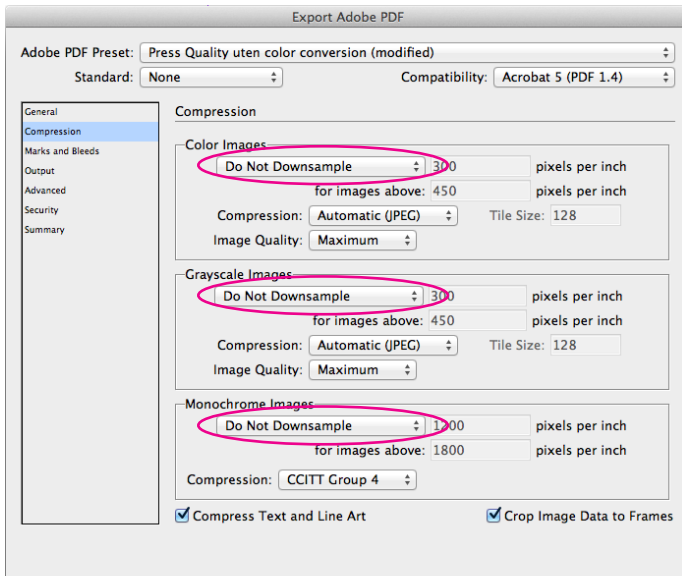
Name example:

MacsimumEvent_1947x2510mm_100%.indd

* Large walls may need to be created in 50, 25 or 10 percent.

SEND PRINT READY PDF'S OR PRODUCTION QUESTIONS TO:

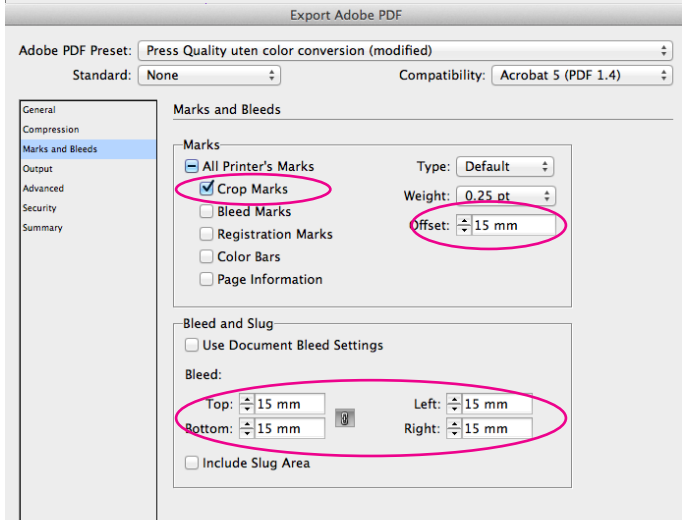
print@macsimum.no



3. EXPORTING TO PDF, INDESIGN (command/ctrl + E OR File > Export)

3.1 Compression: Set “Do Not Downsample” as shown in figure 1.

Minimum image resolution is 72ppi in 100%. When creating the file in 50%, the pictures must be 144ppi or more. In 10%, the pictures must be 720ppi.



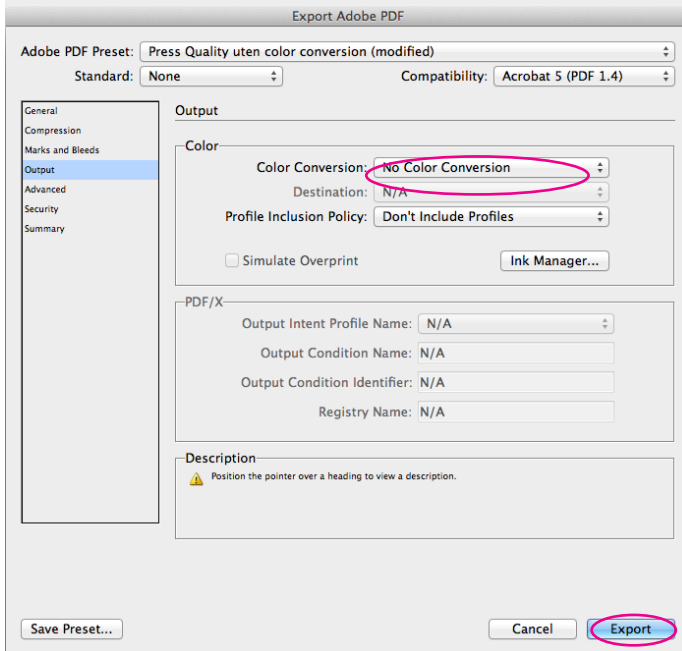
3.2 Marks and Bleed:

- Check/select Crop Marks
- Specify Offset to 15mm
- Set Bleed to 15mm

No other marks are necessary!

If you work in 50%, use 7,5mm

If you work in 10%, use 1,5mm



3.3 Output: Set Colour Conversion to “No Colour Conversion”.

This setting depends on the use of CMYK as colour space.

3 Make sure that the Compression, Marks & Bleed and Output are set as specified above.

SEND PRINT READY PDF'S OR PRODUCTION QUESTIONS TO:

print@macsimum.no

Print ready PDF's in Illustrator

1. NEW DOCUMENT

(command/ctrl + N OR File > New Document)

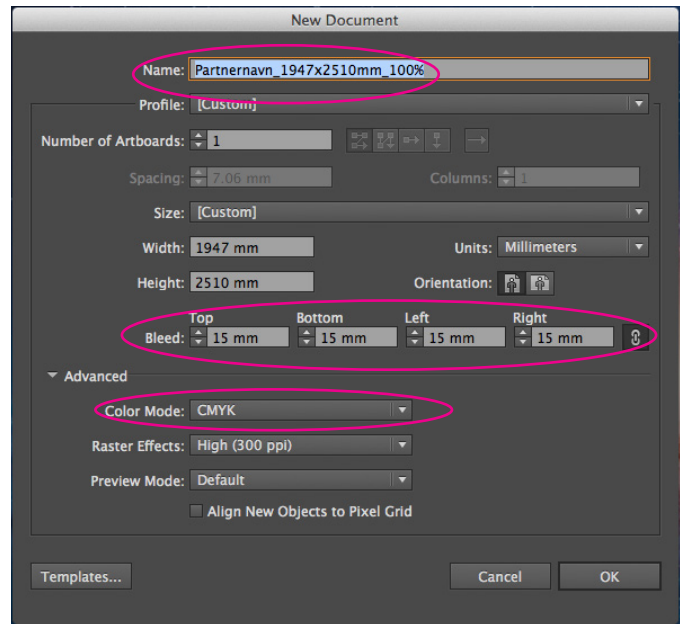
1.1 Make sure the measurements are correct according to your stand. (See "Wall Measurements")

1.2 Specify the Bleed to 15mm in a 100 percent document

(Large walls may need to be created in 50, 25 or 10 percent. Specify Bleed accordingly)

1.3 Set Colour Mode to CMYK

Note! If you have created your document already, you may edit the Bleed setting: alt+command+P OR File > Document Setup (In new versions, you can use Artboard Tool to set/edit the measures.)



1 Make sure your measurements and bleed is correct.

2. SAVE DOCUMENT - FILE NAME

(command+shift+S or File > Save as)

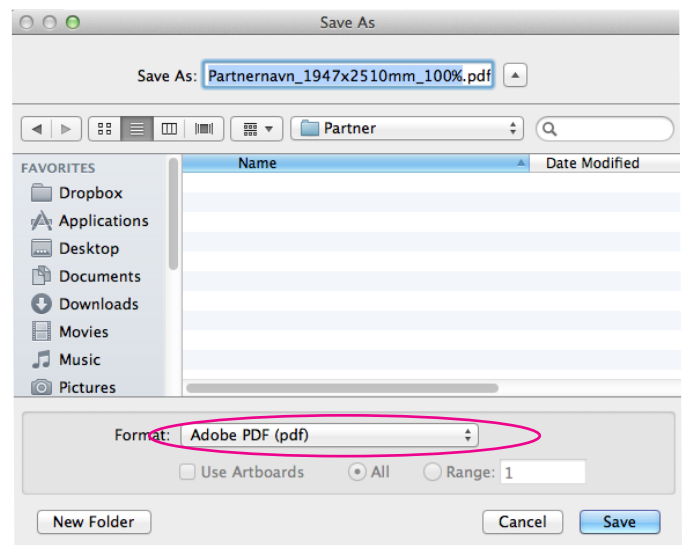
2.1 Include three elements:

- Company Name
- Width x Height in mm
- Percentage*

Name example:

MacsimEvent_1947x2510mm_100%.indd

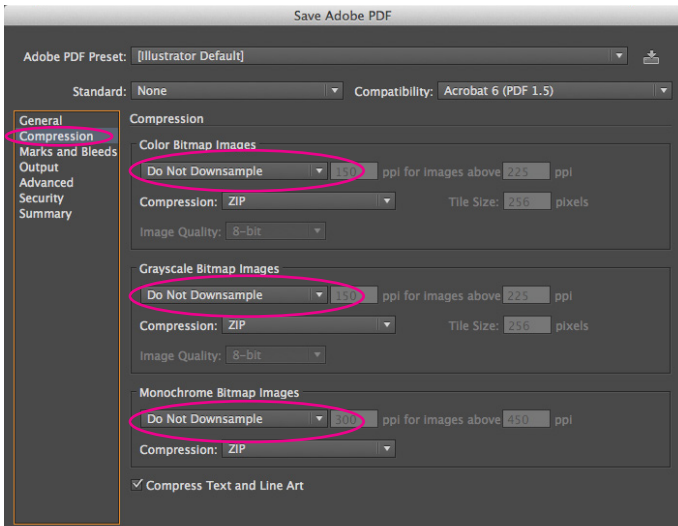
* Large walls may need to be created in 50, 25 or 10 percent.



2 Include company, size and production percentage in the file name when storing your file.

SEND PRINT READY PDF'S OR PRODUCTION QUESTIONS TO:

print@macsim.no



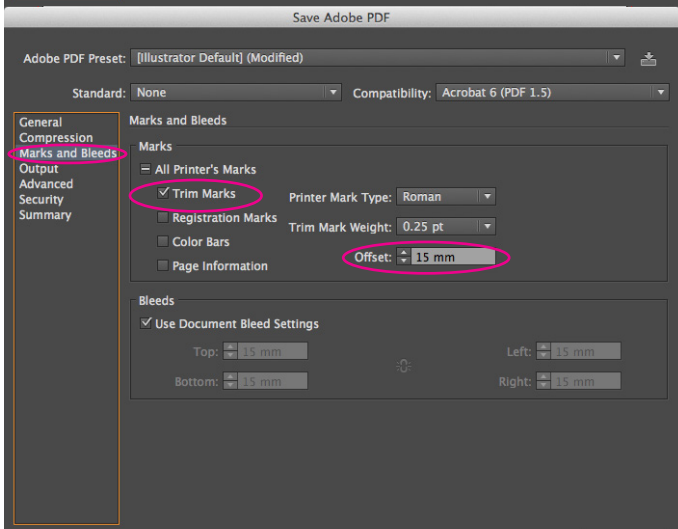
3. SAVE AS PDF FROM ILLUSTRATOR

(command+shift+S OR File >Save as)

In Illustrator you save, instead of export, to PDF. Choose Adobe PDF as format.

3.1 Compression: Set “Do Not Downsample” as shown in figure 1.

Minimum image resolution is 72ppi in 100%. When creating the file in 50%, the pictures must be 144ppi or more. In 10%, the pictures must be 720ppi.



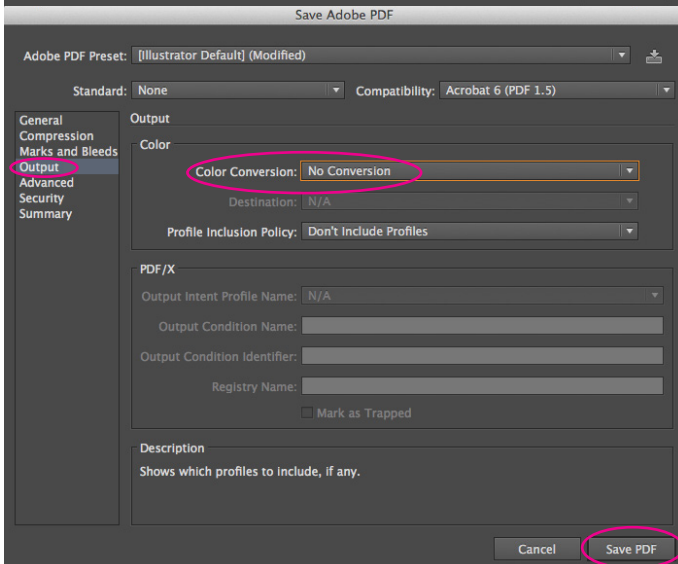
3.2 Marks and Bleeds:

- Check/select Trim Marks
- Specify Offset to 15mm
- Set Bleed to 15mm

Other marks are not necessary!

If you work in 50%, use 7,5mm

If you work in 10%, use 1,5mm



3.3 Output: Set Colour Conversion to “No Colour Conversion”.

This setting depends on the use of CMYK as colour space.

3 Make sure that the Compression, Marks & Bleed and Output are set as specified above.