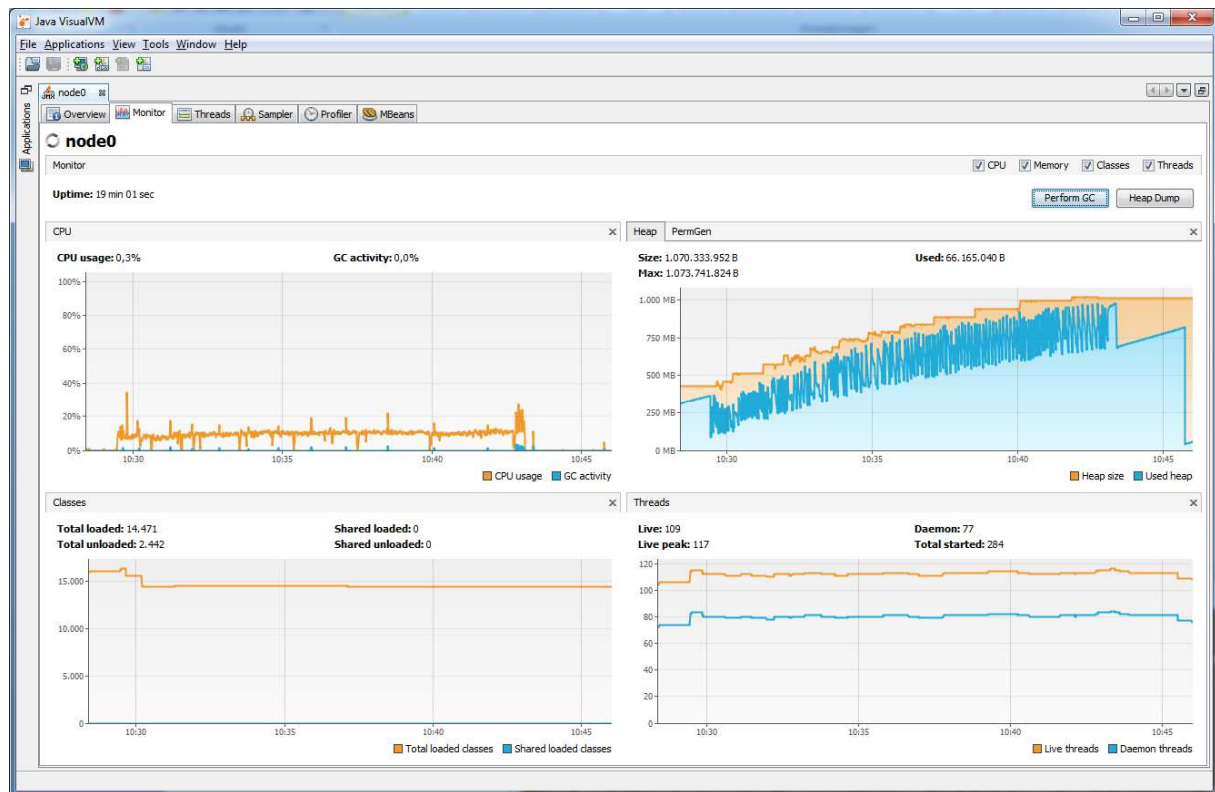


Processing of 150,000 text messages with a text length of 4 kB and a batch size of 10,000 with JDBC Persistence Adapter

- JBossFuse 6.2:
 - Processing time: about 15 minutes
 - Excessive memory usage disappears only after stopping the test program



Remark: the behavior is independent of the actual batch size, it also occurs for smaller batches (i.e. 100 or even 1)

- JBossFuse 6.1:
 - Processing time: about 4 minutes
 - Normal memory usage

