

Web Service

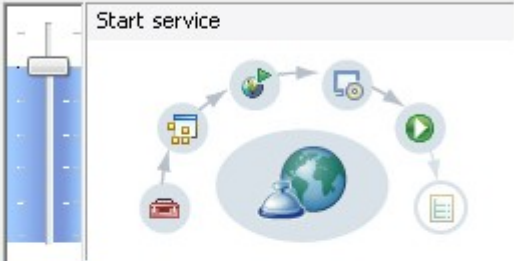
### Web Services

Select a service definition.

Web service type: **Top down Java bean Web Service**

Service definition:  **Browse...**

**Start service**

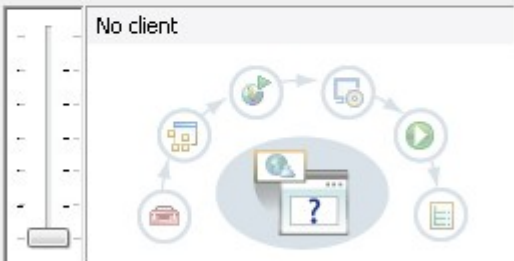


Configuration:

- [Server: JBoss Enterprise Application Platform 5.0](#)
- [Web service runtime: Apache Axis](#)
- [Service project: MyWAR](#)
- [Service EAR project: MyWAREAR](#)

**Client type:** **Java Proxy**

**No client**



Configuration: No client generation.

Publish the Web service

Monitor the Web service

Select Service Definition

Enter a URI to a WSDL, WSIL or HTML document:

Browse...

Select a WSDL

WSDL validation messages:

Severity	Line	Colu...	Message

Stop Validation


Invalid Web service URI. Enter a URI to a WSDL, WSIL or HTML document.

OK Cancel

Select Service Definition

Enter a URI to a WSDL, WSIL or HTML document:

Select a WSDL

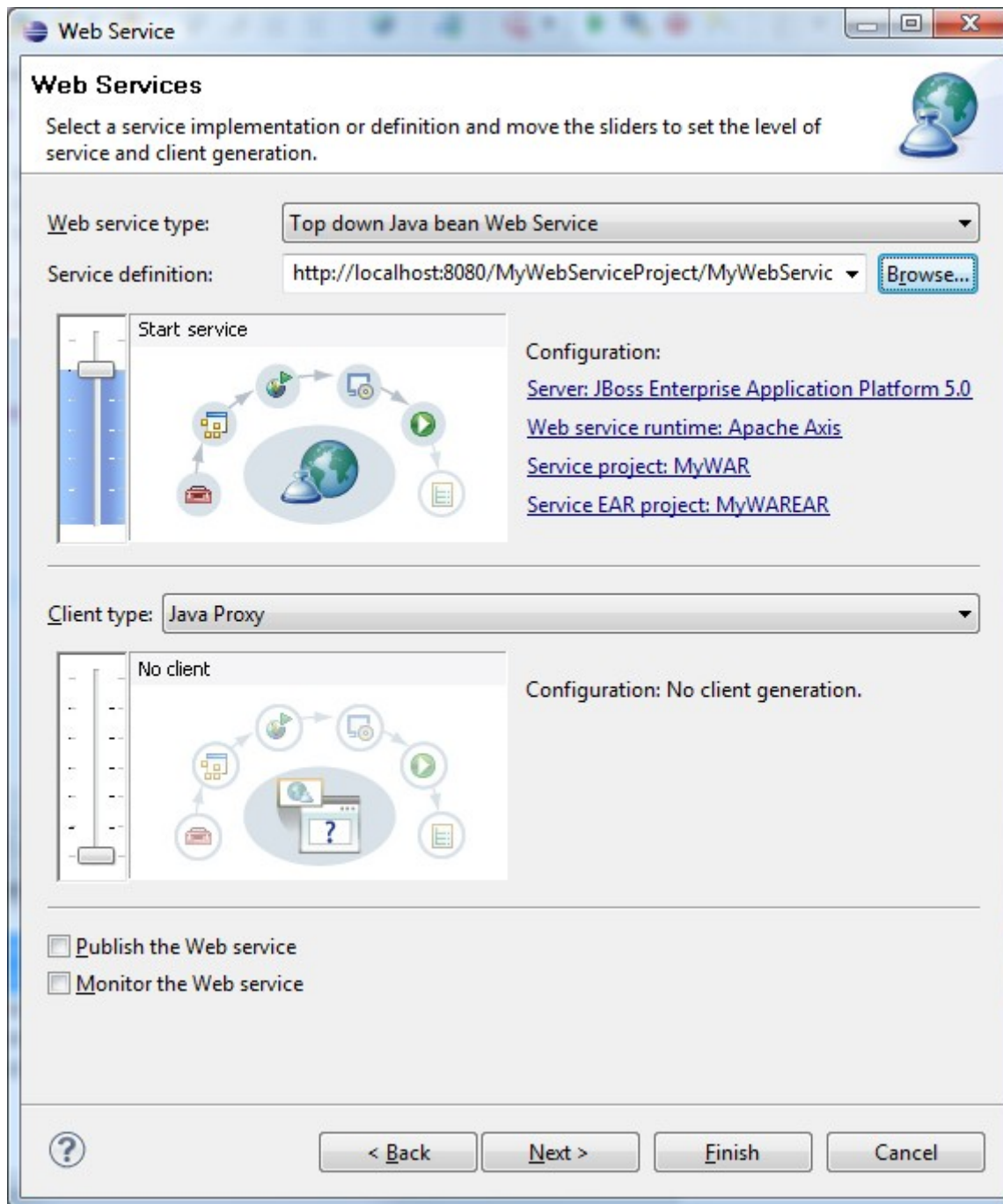
 http://localhost:8080/MyWebServiceProject/MyWebService?wsdl

WSDL validation messages:

Severity	Line	Colu...	Message

Wizard WSDL validation is disabled.


All the Defaults Are wrong



Web Service

### JBoss Web Service Code Generation Configuration

Please input the appropriate option for the code generation



Package name

JAX-WS specification

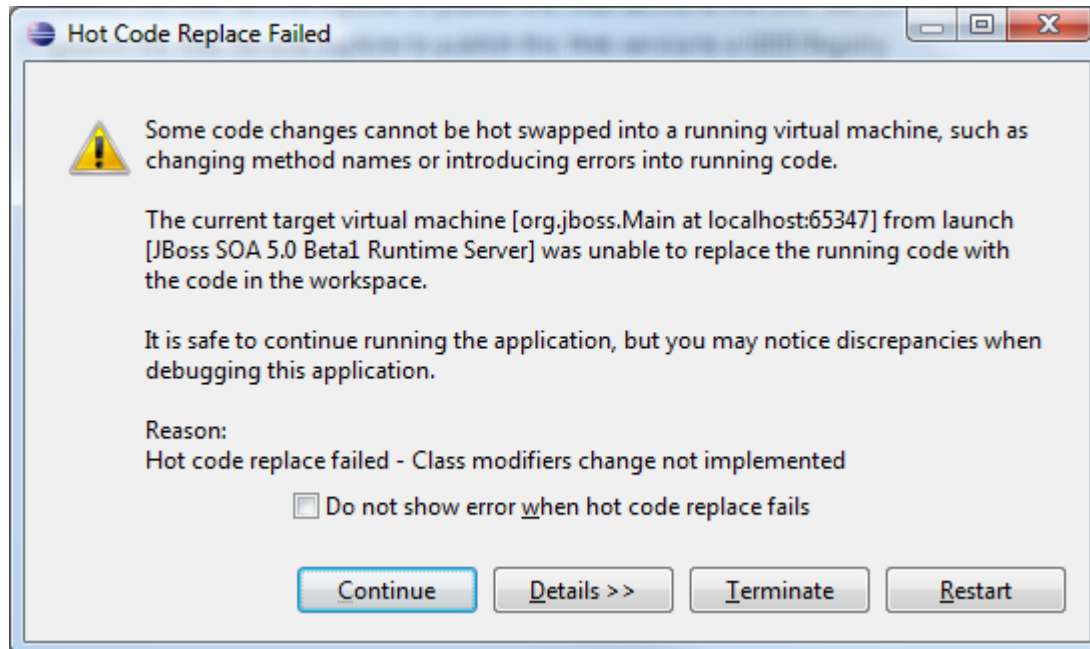
Catalog file

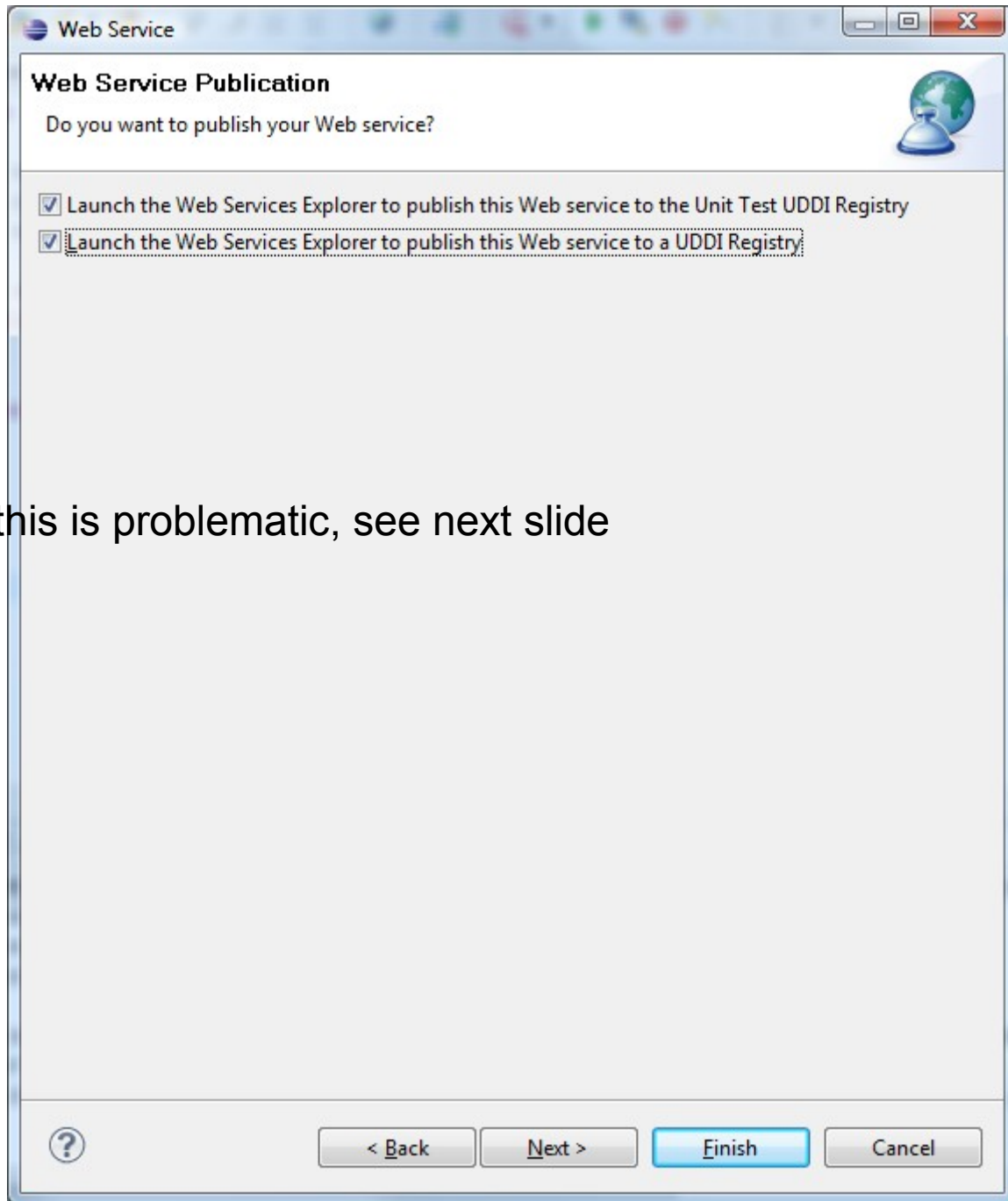
Binding files

Enable SOAP 1.2 binding extension (This option is only available for JBossWS 3.0 or later)

Generate default Web Service Implementation classes

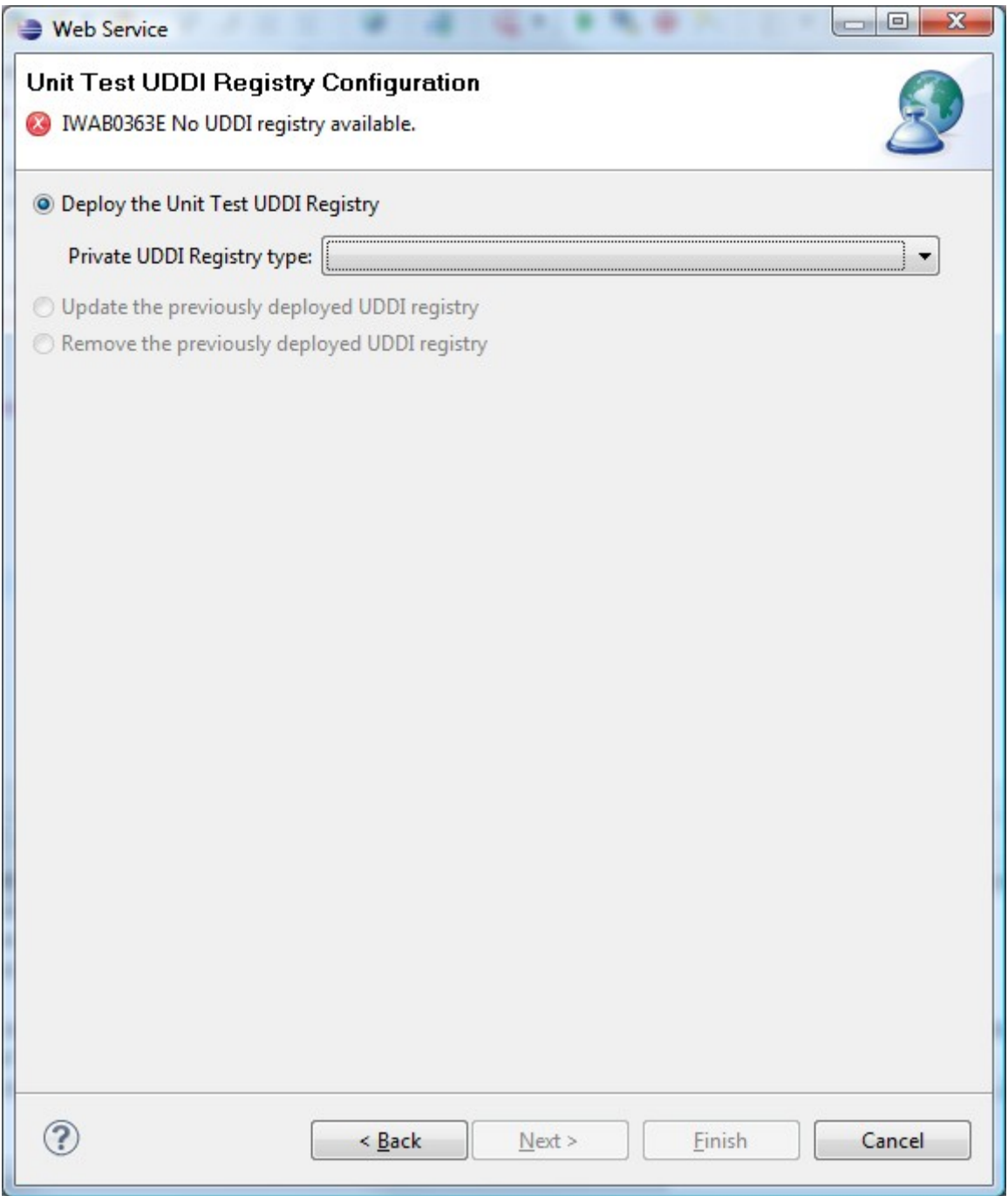
Update the default Web.xml





Checking this is problematic, see next slide







## JBossWS/Services

### Registered Service Endpoints

Endpoint Name `jboss.ws:context=MyWAREAR-MyWAR,endpoint=MyWebService`  
Endpoint Address `http://localhost:8080/MyWAREAR-MyWAR/MyWebService?wsdl`

StartTime	StopTime	RequestCount	ResponseCount	FaultCount
Fri Dec 18 13:37:56 EST 2009		0	0	0
MinProcessingTime	MaxProcessingTime	AvgProcessingTime		
0	0	0		

Endpoint Name `jboss.ws:context=MyWebServiceProject,endpoint=MyWebServiceServlet`  
Endpoint Address `http://localhost:8080/MyWebServiceProject/MyWebService?wsdl`

StartTime	StopTime	RequestCount	ResponseCount	FaultCount
Fri Dec 18 13:37:51 EST 2009		0	0	0
MinProcessingTime	MaxProcessingTime	AvgProcessingTime		
0	0	0		

# HTTP Status 404 - /MyWAREAR-MyWAR/MyWebService

**type** Status report  
**message** /MyWAREAR-MyWAR/MyWebService  
**description** The requested resource (/MyWAREAR-MyWAR/MyWebService) is not available.

## JBoss Web/2.1.3